



COLA 2021/2022

16th International Conference on Laser Ablation

Hybrid Format: Kunibiki Messe in Matsue, Japan & online

24-29 April, 2022

Important Dates

- Notification of acceptance: Early January 2022
- Preliminary program distribution: Late January 2022
- Registration starts: 1 February 2022
- Early bird registration closes: 8 April 2022

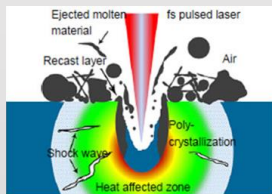
CONFERENCE CHAIRS

Koji Sugioka (Riken, Japan), Yoshiki Nakata (Osaka University, Japan),
Nadezhda Bulgakova (HiLASE, Czech Republic), Alberto Piqué (Naval
Research Laboratory, U.S.A)

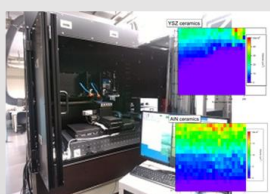
CONFERENCE TOPICS



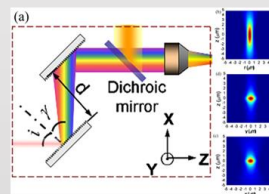
Practical Applications of
Laser Processing



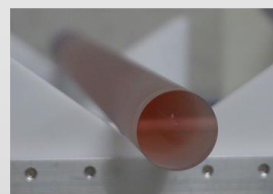
Fundamentals of Laser-
Material Interactions



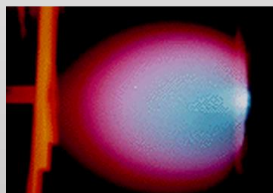
New Trends in Laser
Processing



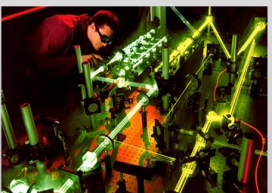
Smart Beam Shaping and
Manipulation



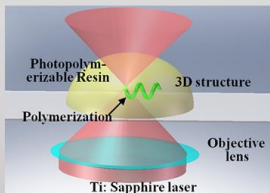
Emerging Photon Sources
and Applications



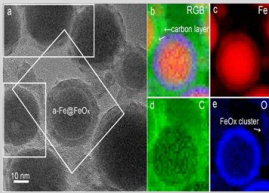
Pulsed Laser Deposition



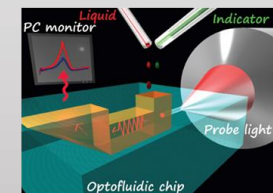
Ultrafast Phenomena



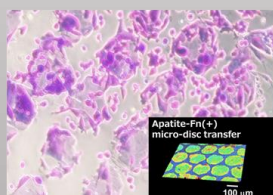
Laser Direct Write



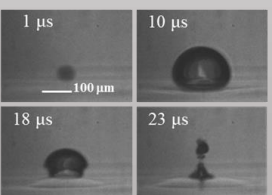
Lasers in Nanoscience



Laser-based Analytical Methods



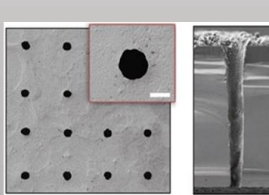
Lasers for Biology and Life
Sciences



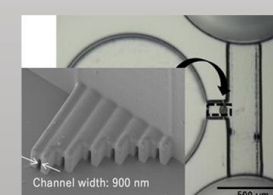
Laser Interaction in Bulk
Materials and in Liquids



Micro/nano Structuring



Laser Micro/Nano Machining

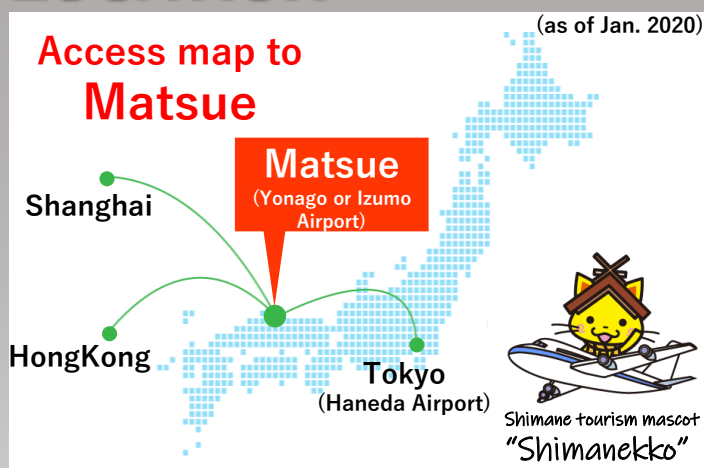


Laser 3D Processing

URL: <http://www.cola2021.org/>
Email: secretary@cola2021.org



LOCATION



Matsue is a beautiful town surrounded by water and blessed with an abundance of nature. At the beginning of the 17th century, a feudal lord built a formidable castle on the banks of a lake and the castle became the center of the town. There is also a large number of artifacts from the ancient Izumo culture flourished (4th - 8th century).

PLACES TO VISIT



Matsue Castle nicknamed "plover castle" is one of the few remaining medieval castles in Japan. The castle tower is remaining their original wooden form.



Izumo Taisha is one of the oldest shrines in Japan. In October, all of Japanese deities congregate this place for their annual meeting.



Matsue City is surrounded in cultural assets and historical sites. Enjoy the mixed flavor of Japanese tradition, culture and history.